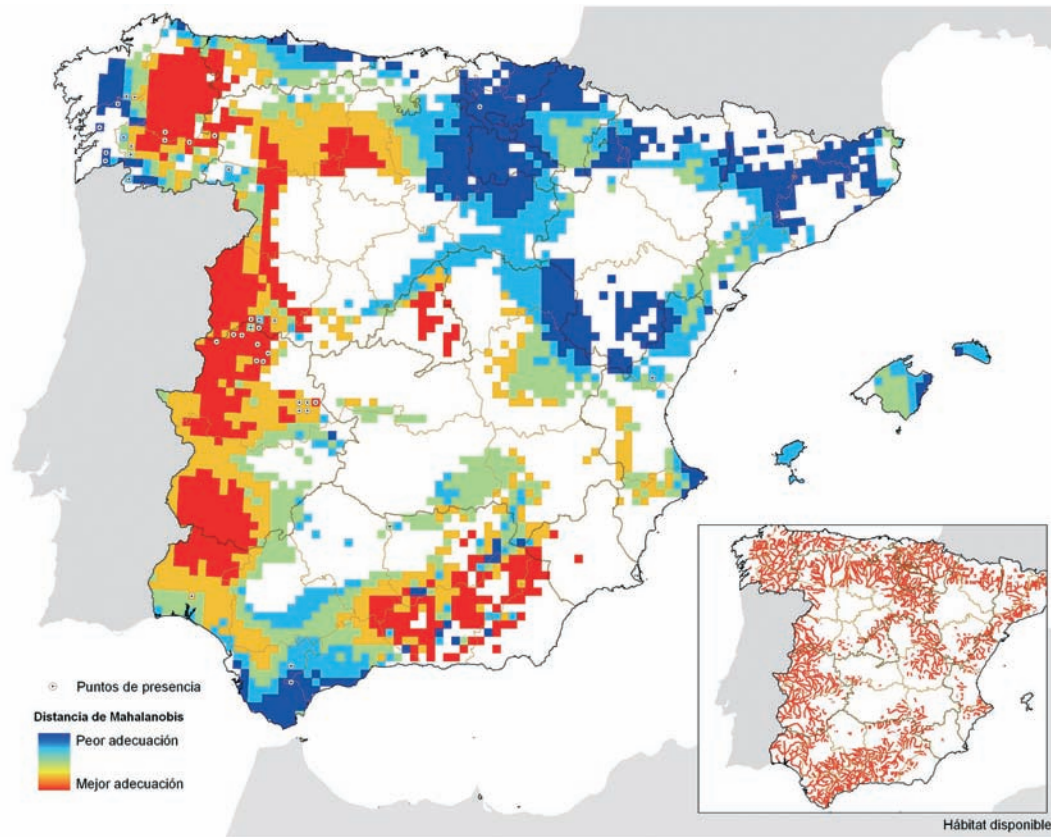


# MAPAS DE DISTRIBUCIÓN POTENCIAL DE LOS ARTRÓPODOS EN PELIGRO CRÍTICO Y EN PELIGRO

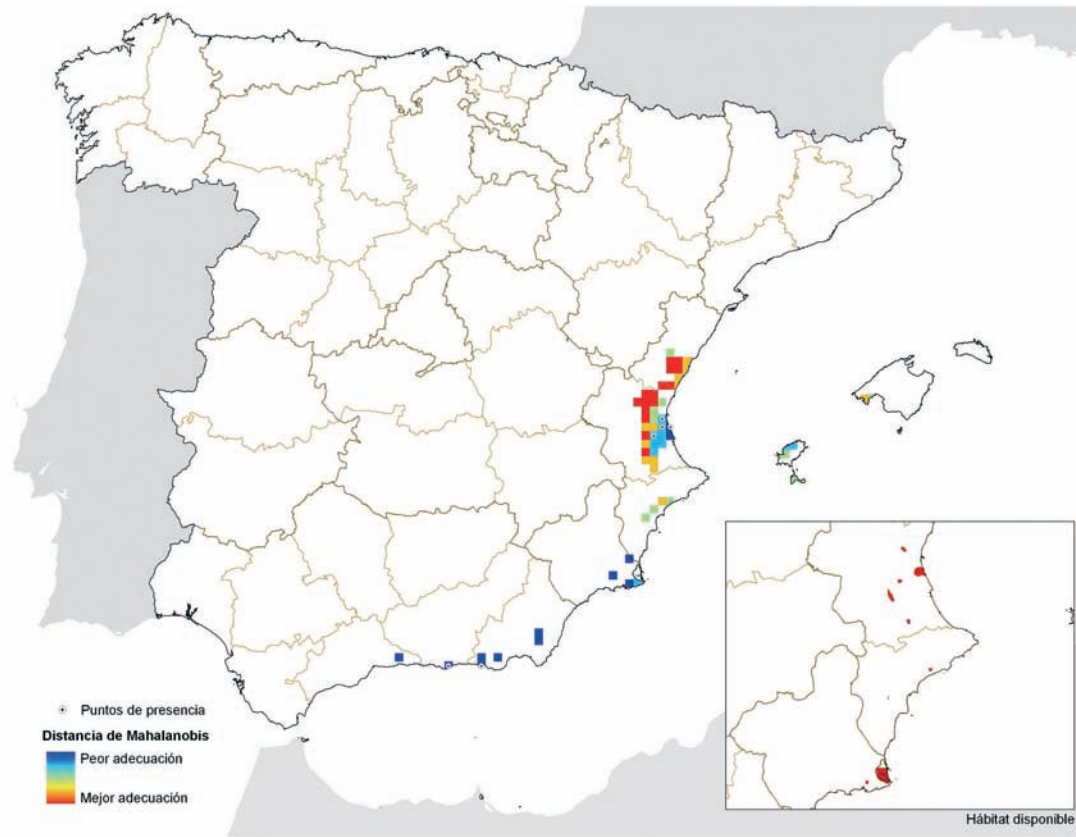
## ESPECIES EN PELIGRO CRÍTICO

*Macromia splendens* (Pictet, 1843)

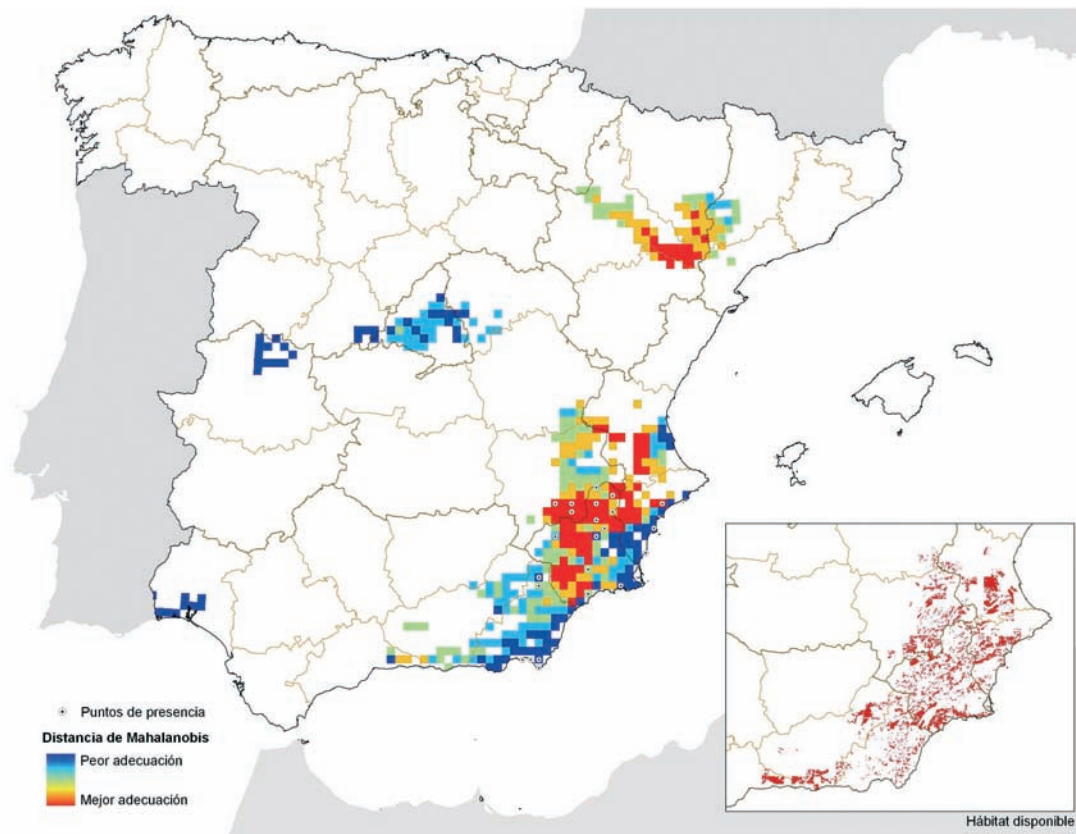


## ESPECIES EN PELIGRO

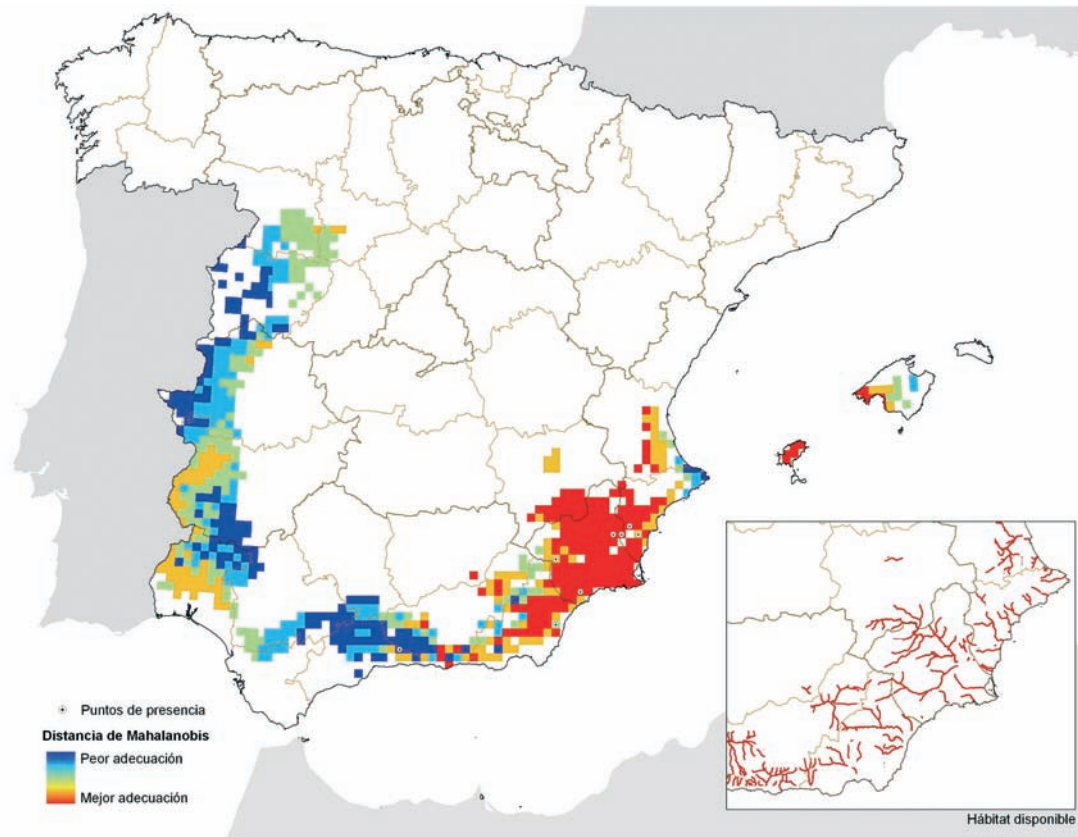
### *Cybister (Melanectes) vulneratus* Klug, 1834



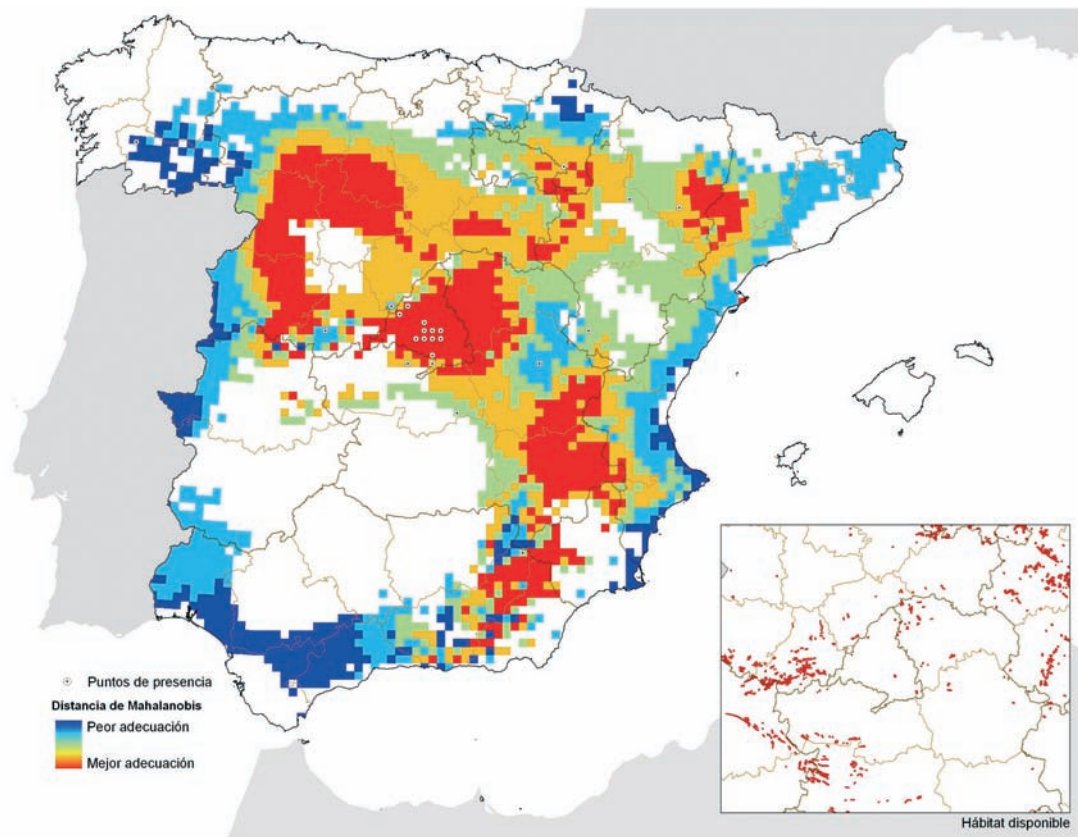
### *Jekelius punctatolineatus* (François, 1904)



*Ochthebius montesi* Ferro, 1983

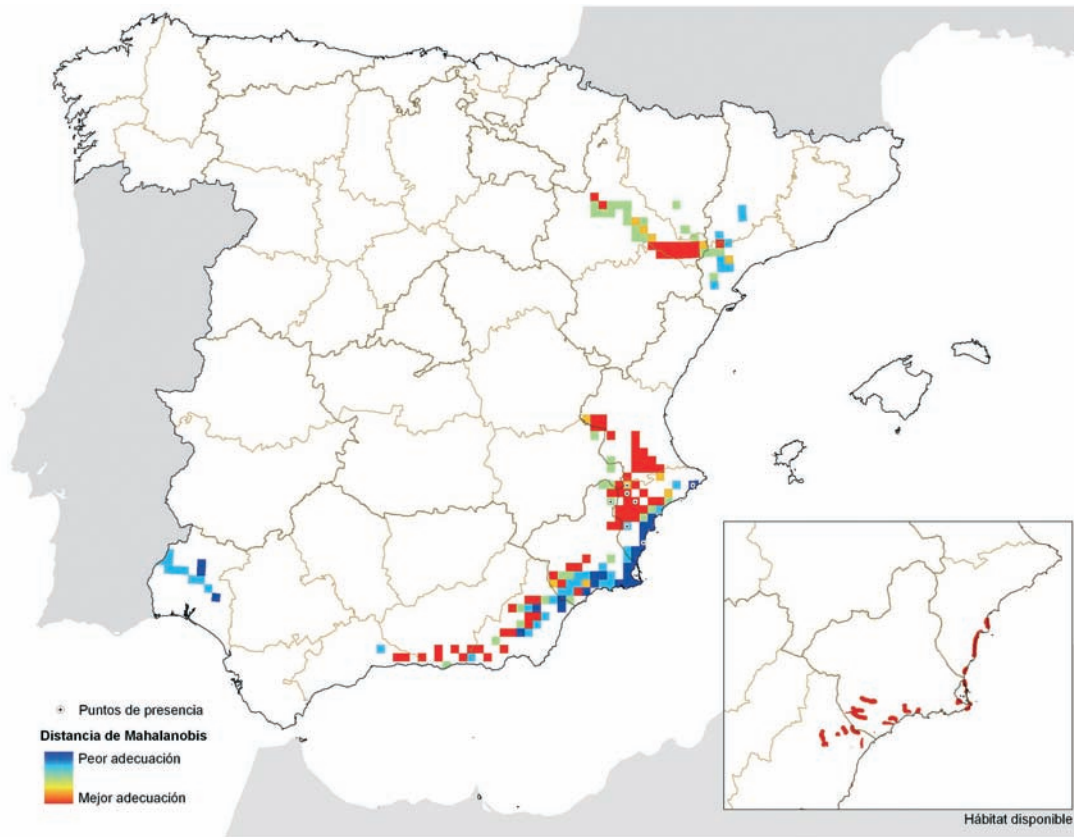


*Mylabris uhagonii* Martínez Sáez, 1873

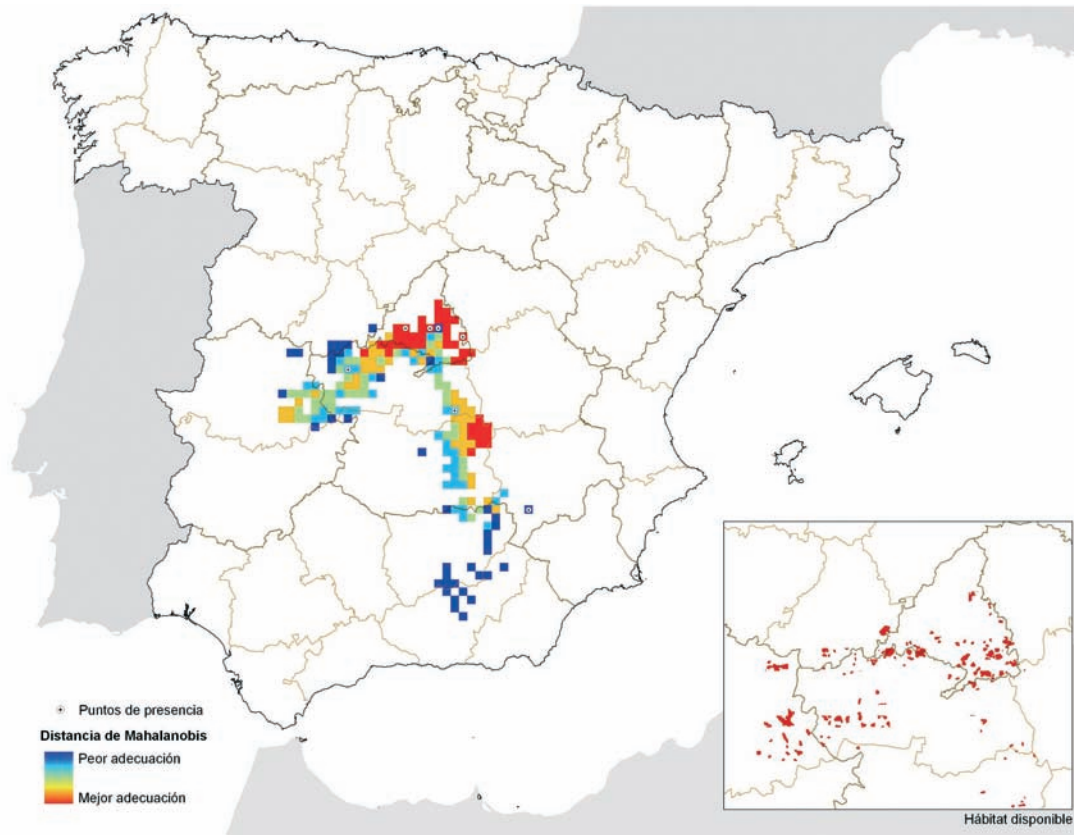




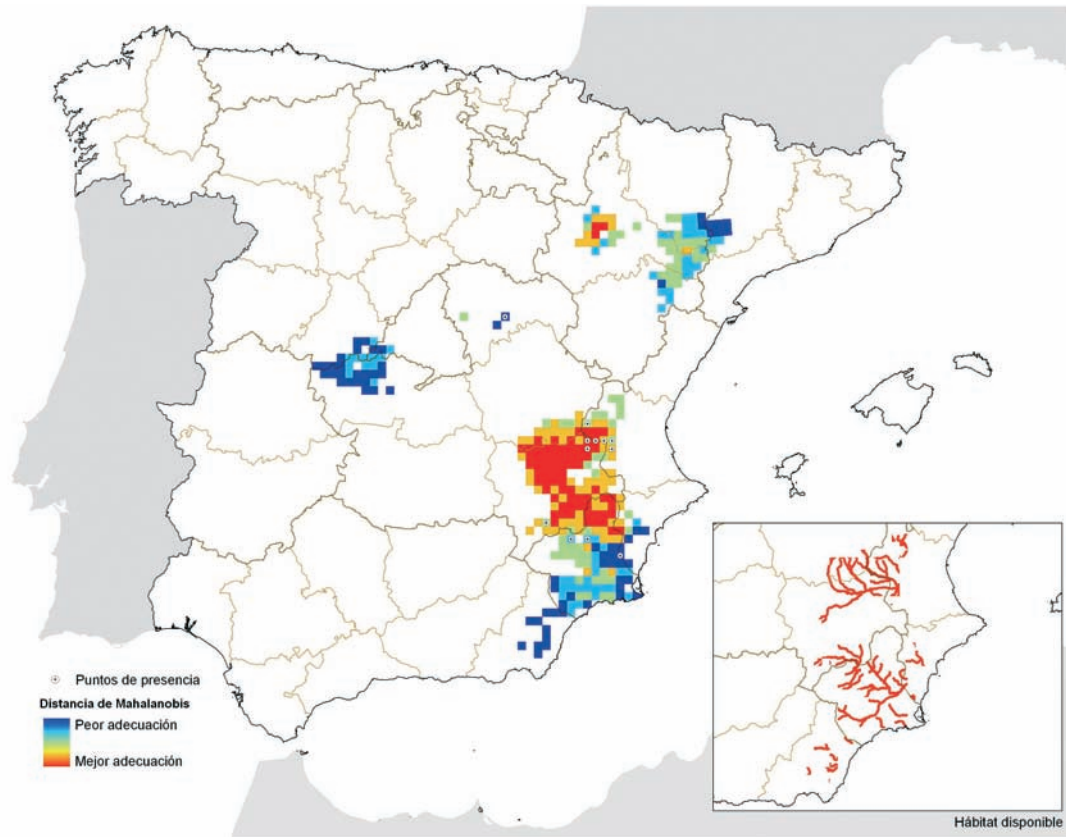
*Paratriodonta alicantina* (Reitter, 1890)



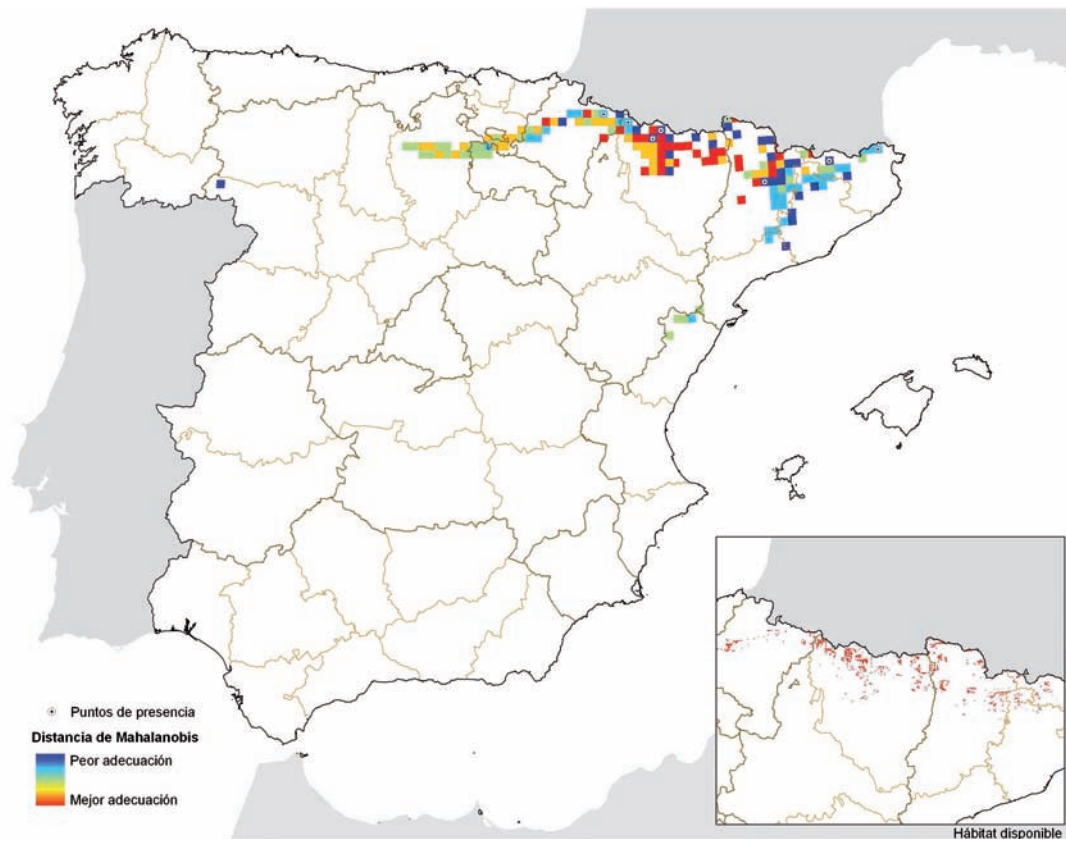
*Scarabaeus (Scarabaeus) pius* (Illiger, 1803)



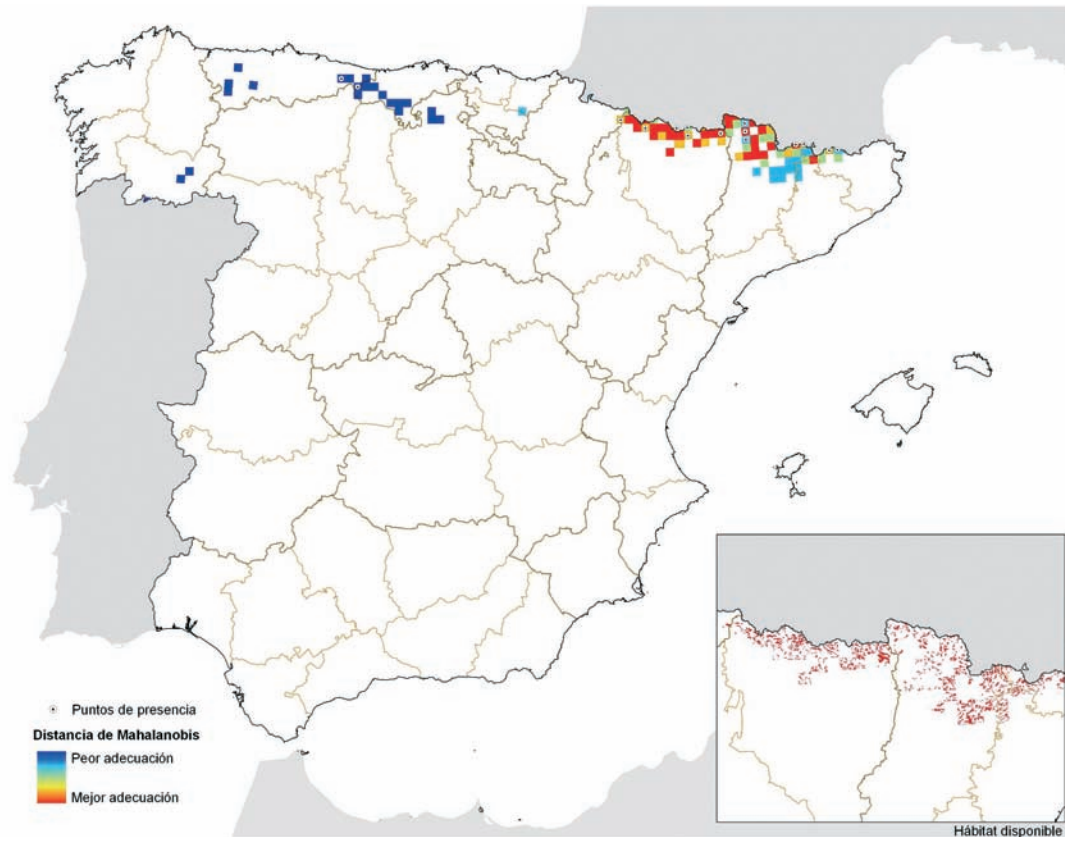
***Prosopistoma pennigerum* (Müller, 1785)**



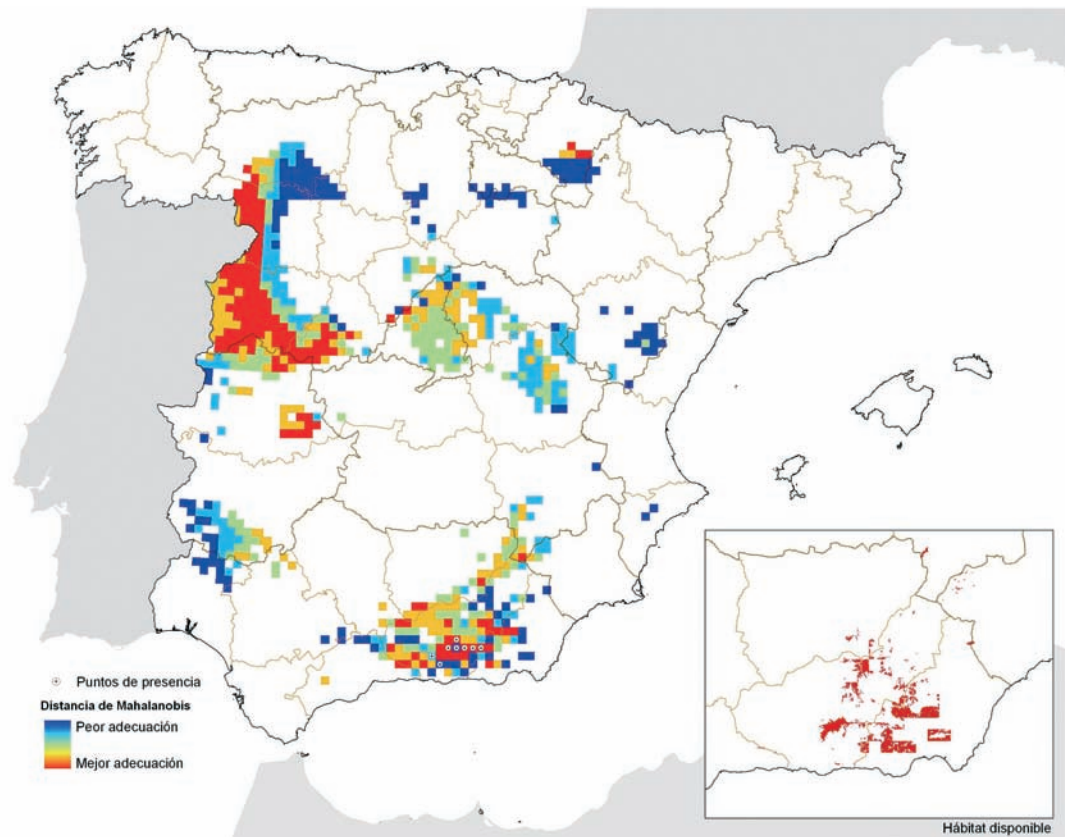
***Bombus (Confusibombus) confusus* Schenk, 1861**



*Mendacibombus (Mendacibombus) mendax* (Gerstaecker, 1869)

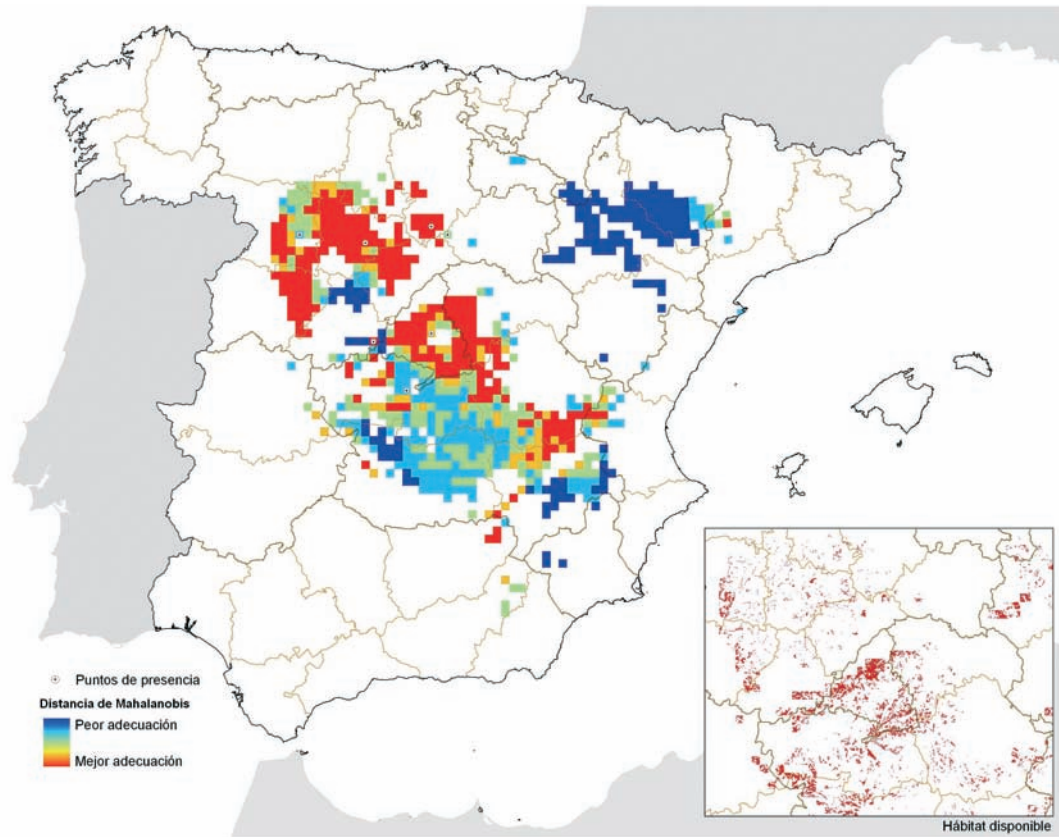


*Agrides zulichi* Hemming, 1933

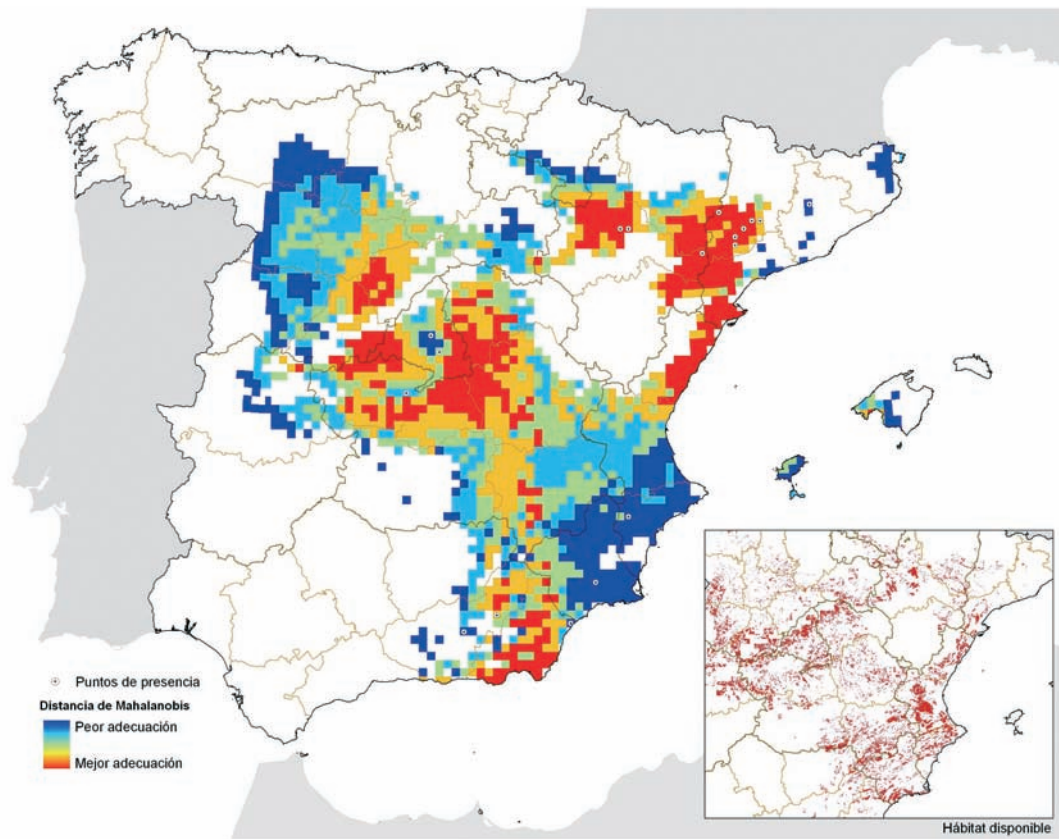




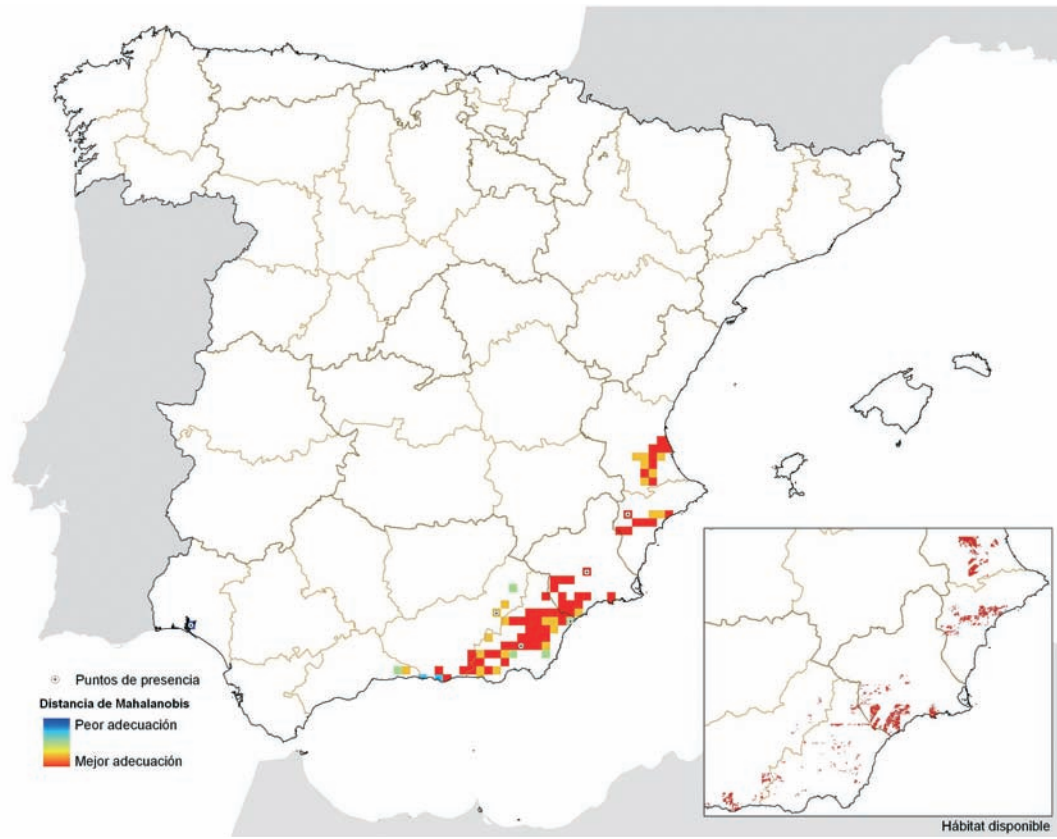
***Agrotis yelai* Fibiger, 1990**



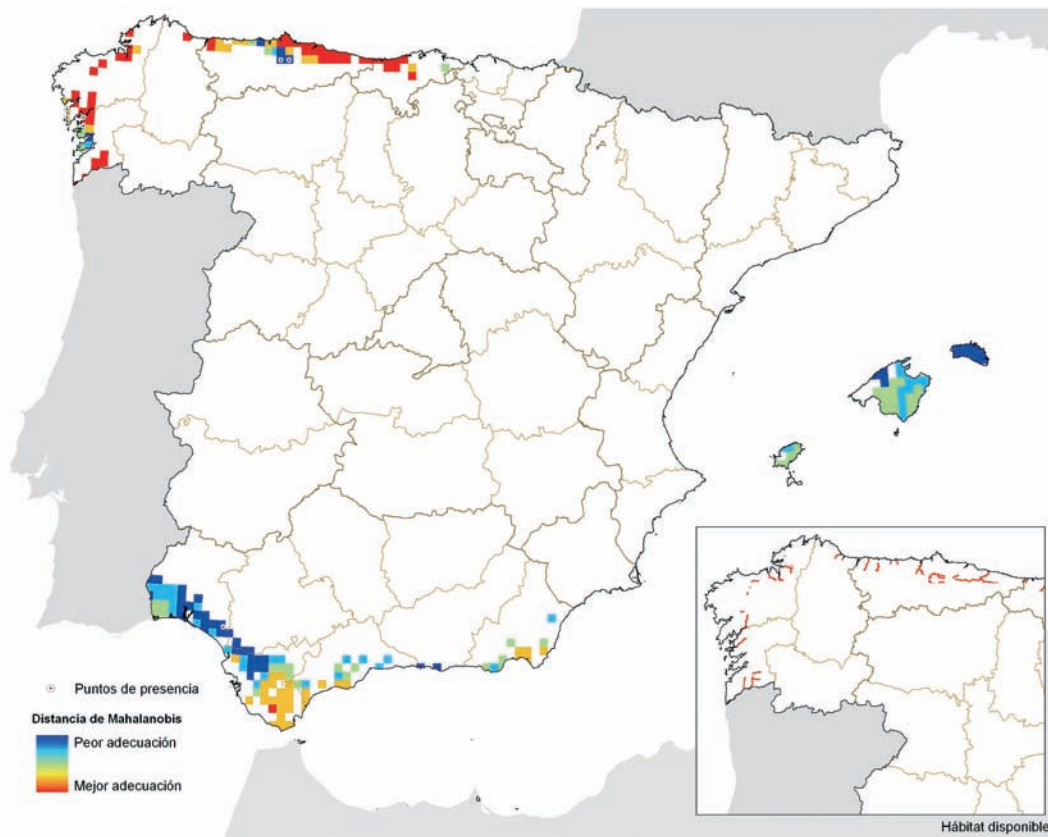
***Eremopola (Eremopola) lenis* (Staudinger, 1892)**



*Eremopola (Eremochlaena) orana* (H. Lucas, 1894)

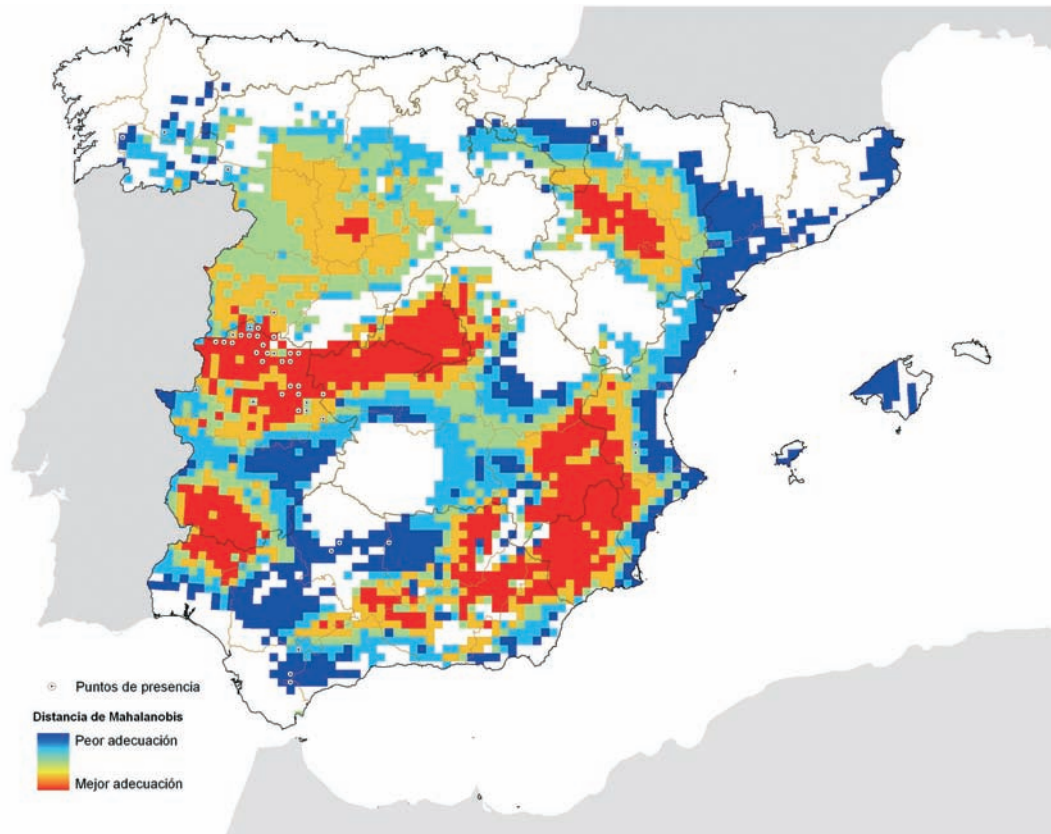


*Brachytron pratense* (Müller, 1764)

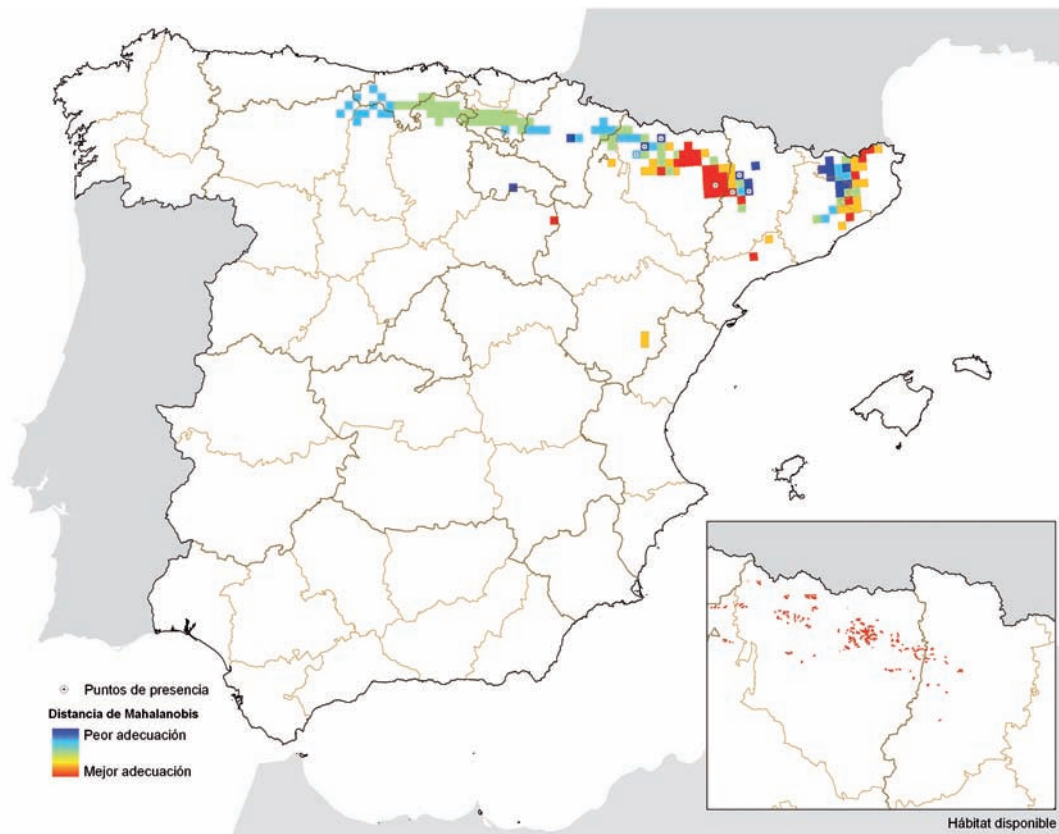




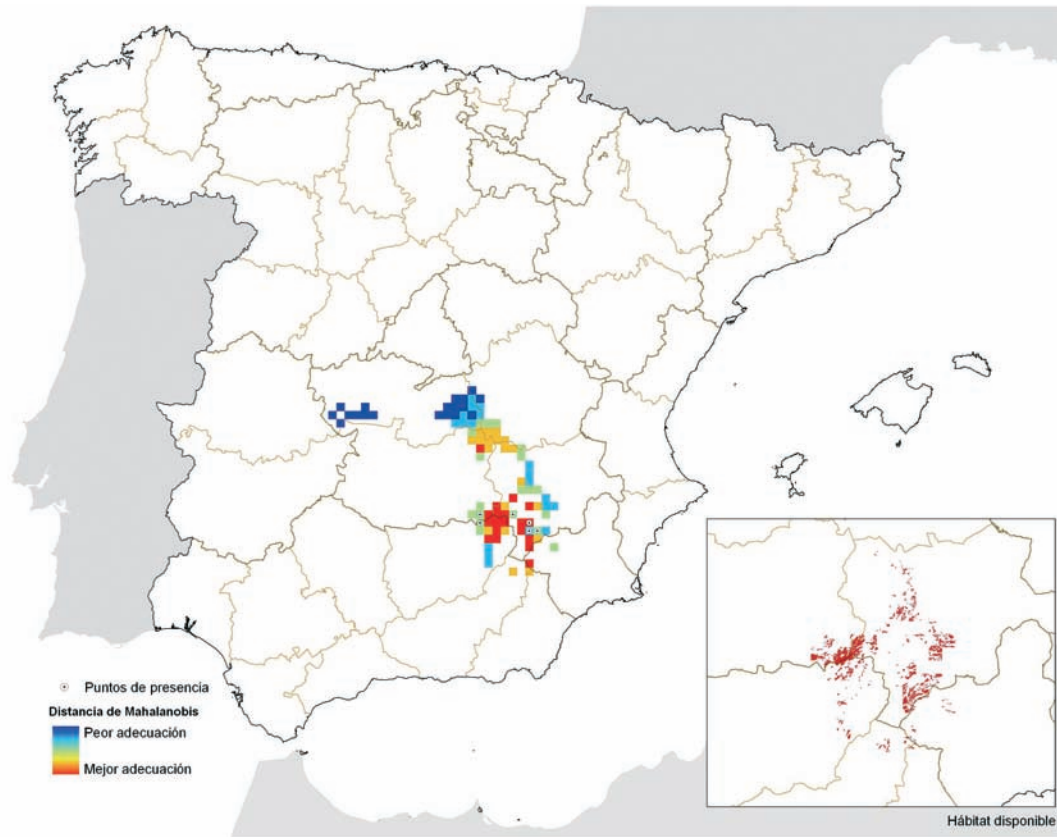
***Gomphus graslinii* Rambur, 1842**



***Arcyptera brevipennis* (Brunner von Wattenwyl, 1861)**



*Kurtharzia sulcata* (Bolívar, 1912)



*Saga pedo* (Pallas, 1771)

